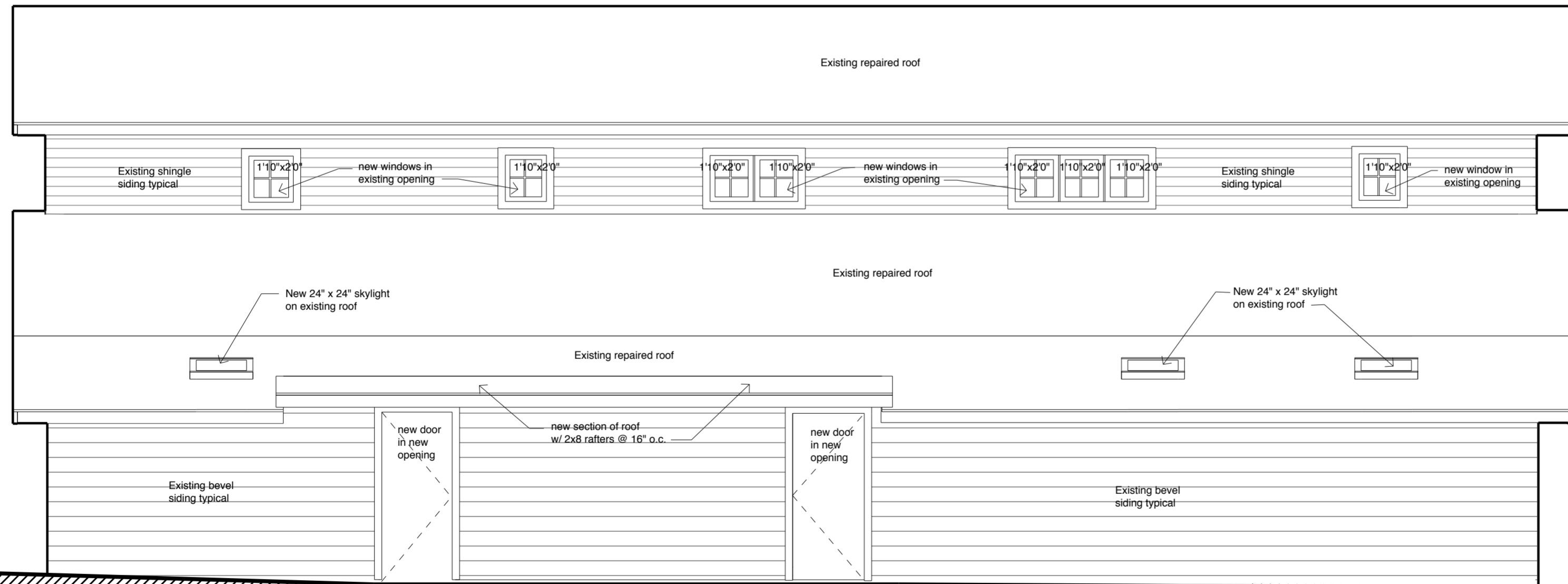


NOTE: Repair or replace, as needed, existing siding, trim or fascia. All new material and details are to match existing as much as possible.

NORTH ELEVATION 1/4" = 1'-0"
5/15/12



NOTE: Repair or replace, as needed, existing siding, trim or fascia. All new material and details are to match existing as much as possible.

EAST ELEVATION 1/4" = 1'-0"
5/15/12