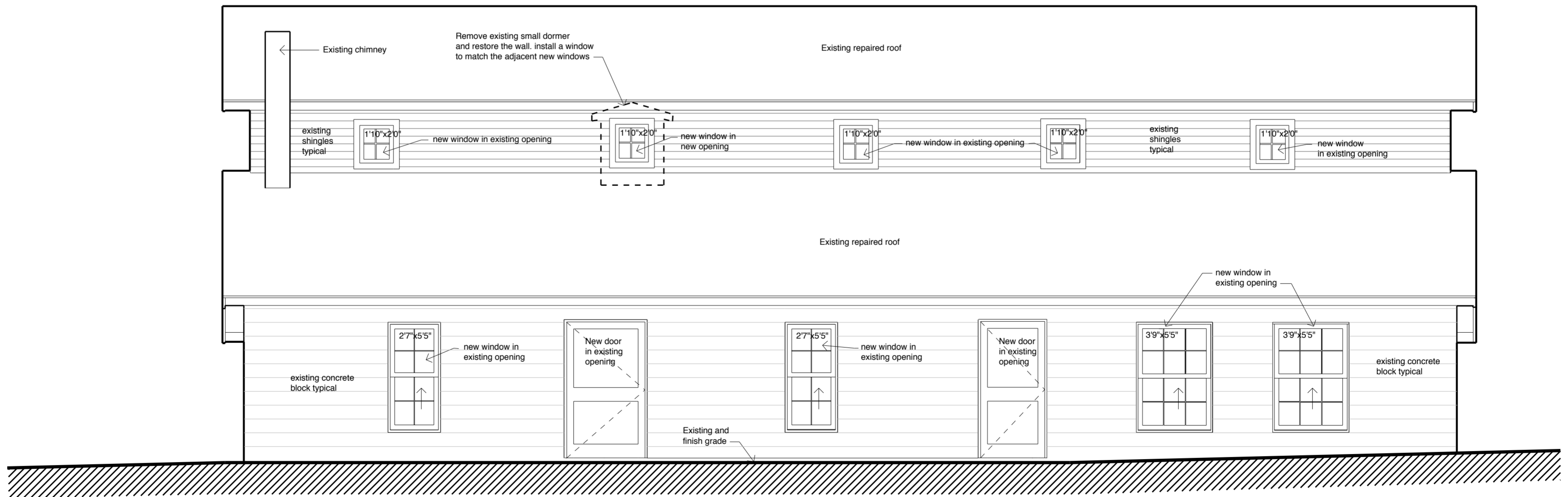


NOTE: Repair or replace, as needed, existing siding, trim or fascia. All new material and details are to match existing as much as possible.

SOUTH ELEVATION 1/4" = 1'-0"  
5/15/12



WEST ELEVATION 1/4" = 1'-0"  
5/15/12

NOTE: Repair or replace, as needed, existing siding, trim or fascia. All new material and details are to match existing as much as possible.